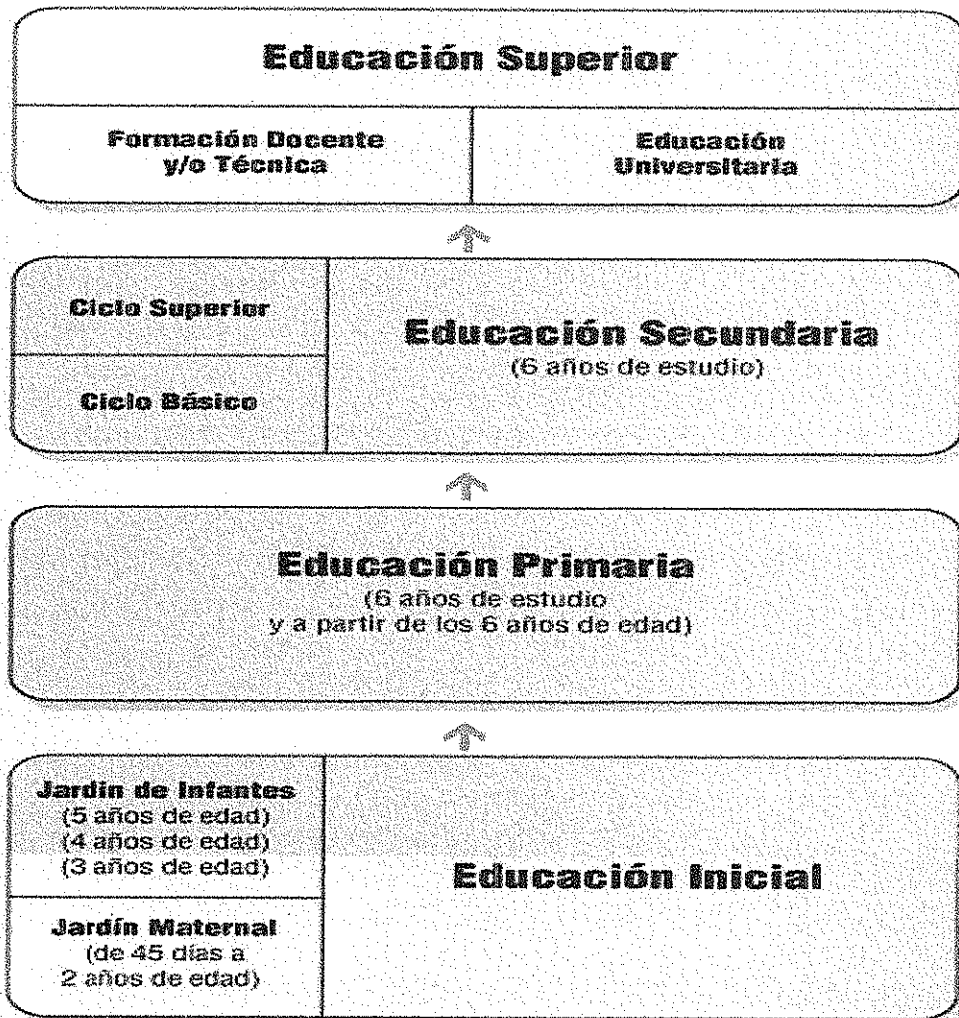


ESTRUCTURA DEL SISTEMA EDUCATIVO DE LA PROVINCIA DE BUENOS AIRES

LEY N° 13.688

C.I.E.P.S.I.
 VOCACIONAL
 Folio: 116 SF 3
 D.F.

NIVELES



E D U C A C I Ó N

MODALIDADES

- Certifican Nivel:**
- Educación Especial
 - Educación Permanente de Jóvenes, Adultos, Adultos Mayores y Formación Profesional
 - Educación Técnico Profesional
 - Educación Artística
- No certifican Nivel:**
- Educación Física
 - Psicología Comunitaria y Pedagogía Social
 - Educación Intercultural
 - Educación Ambiental

ÁMBITOS DE DESARROLLO DE LA EDUCACIÓN

- Urbanos
- Rurales, Continentales y de Islas
- Contextos de Encierro
- Domiciliarios y Hospitalarios
- Virtuales

1. The first part of the document discusses the importance of maintaining accurate records of all transactions and activities related to the business. It emphasizes that proper record-keeping is essential for tax compliance and financial management.

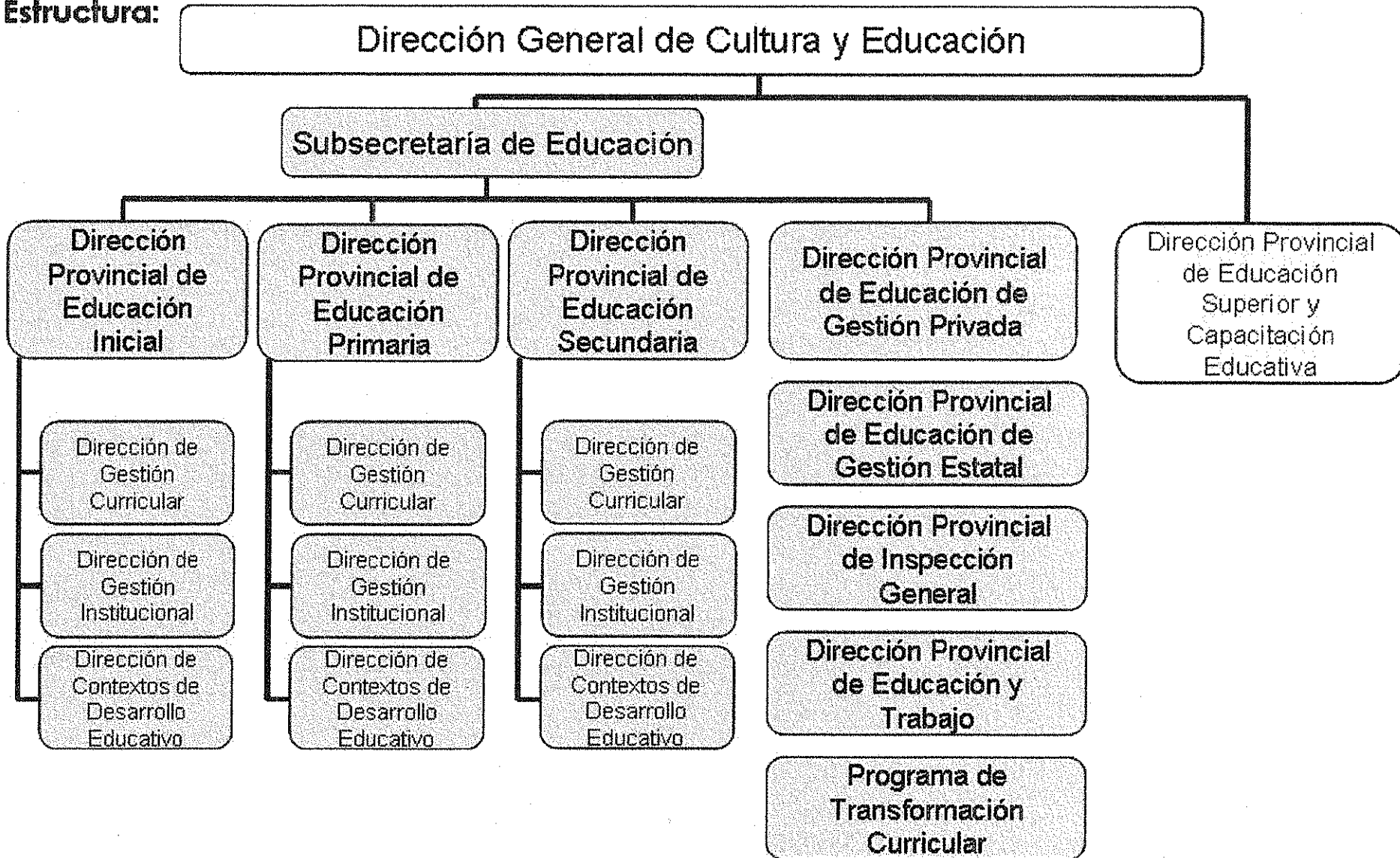
2. The second part of the document provides a detailed overview of the various tax forms and reports that must be filed with the relevant authorities. It includes information on the deadlines for filing and the consequences of non-compliance.

3. The third part of the document outlines the specific requirements for the preparation and submission of the tax returns. It covers the necessary documentation, such as receipts, invoices, and bank statements, and provides guidance on how to organize and present the information.

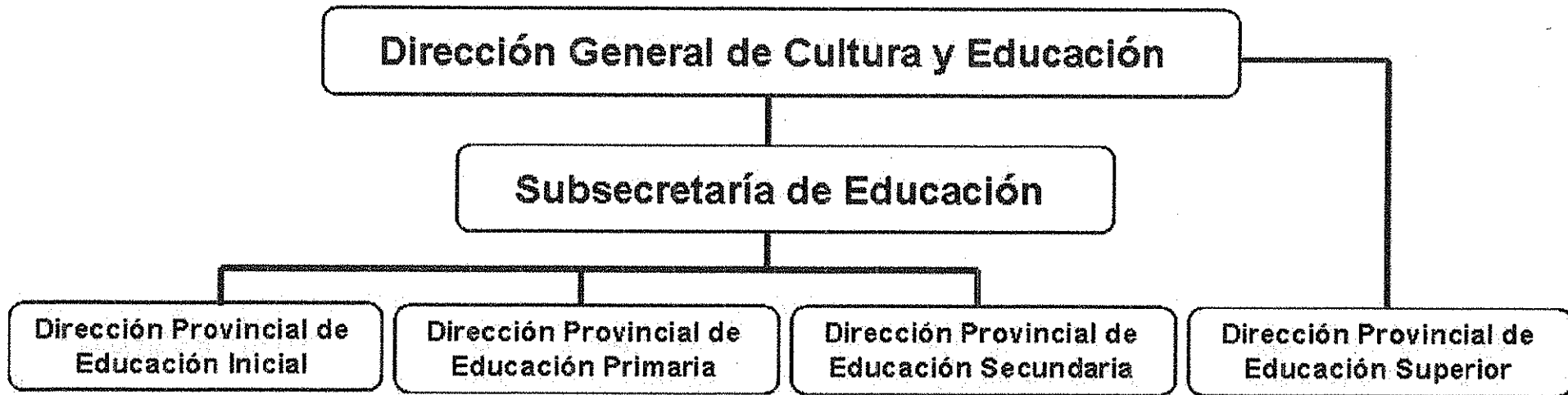
4. The fourth part of the document discusses the various deductions and credits that are available to businesses and individuals. It explains the eligibility criteria for each and provides examples of how they can be applied to reduce the overall tax liability.

5. The fifth part of the document provides a comprehensive overview of the tax system, including the different types of taxes and the way they are calculated and collected. It also discusses the impact of tax changes and provides information on how to stay up-to-date on the latest developments.

Estructura:







Articulación entre niveles y modalidades

